

CALIFORNIA ACCIDENT FACTS

An Infographic Brought To You By:



VEHICLE ACCIDENT FATALITIES BETWEEN 2010 - 2014



Increase occurred in **Traffic Fatalities** through the first **6 MONTHS** in 2015

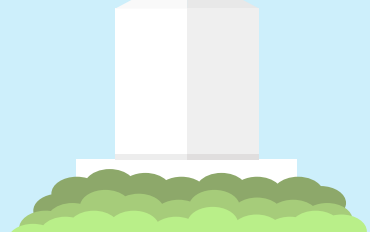
IN 2013 CALIFORNIA ROADS SAW



156,909 INJURY CRASHES
223,128 people injured



2,853 FATAL COLLISIONS
3,107 people killed



That's an average of **611 INJURIES** and **8 FATALITIES PER DAY!**

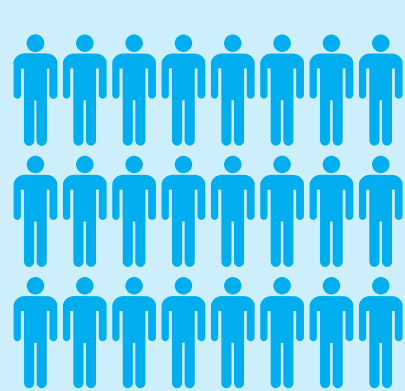


COLLISIONS IN 2013

January

208

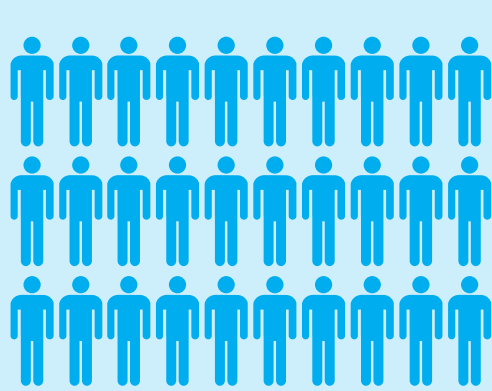
Fatalities



October

298

Fatalities



OCTOBER was the **Most Dangerous** month while **JANUARY** was the **Least Dangerous** month

DEADLIEST ACCIDENT TYPES & CAUSES (2013)



1 | Hit Object
795 Fatalities

2 | Auto/Pedestrian
733 Fatalities



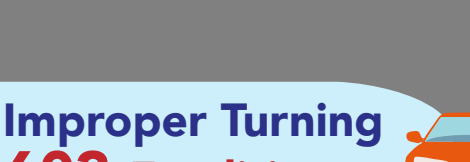
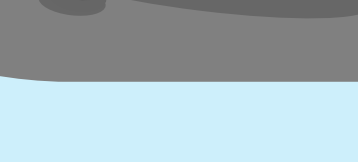
3 | Head-On
304 Fatalities

4 | Broadside
461 Fatalities



5 | Speeding
992 Fatalities

6 | Drunk Driving
883 Fatalities



7 | Improper Turning
603 Fatalities

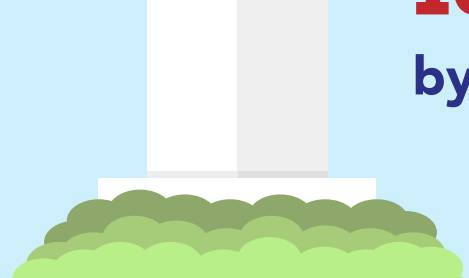


8 | Pedestrian Violation
435 Fatalities



HIT-AND-RUN (2013)

Resulted in **297 fatalities** and **18,351 injuries** involved hit-and-run drivers



168 pedestrians were killed by hit-and-run drivers



TRUCK ACCIDENTS (2013)



Resulted in **278 fatalities** and **7,511 injuries**



Auto accident **INJURIES** and **FATALITIES** cost Californians over **\$21 BILLION** each year!

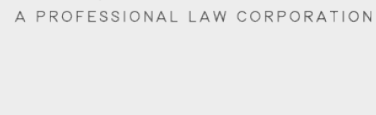


CALL NOW

Were you hurt or lost a loved one in a car accident?
Contact Ardalan & Associates.

(888) 259-5861

Other attorneys bring tough cases to us. Start here.
We serve injury victims in Los Angeles and surrounding counties.



*Statistics from the California Office of Traffic Safety, National Highway Traffic Safety Administration
http://www.ots.ca.gov/OTS_and_Traffic_Safety/default.asp, http://www.nrd.nhtsa.dot.gov/departments/nrd-30/nhtsa/STSI/6_CA/2014/6_CA_2014.htm